



TECHNICAL NOTE # 475

0247573-A01

Adapter Kit: 3/4 to 1/2 inch (19.3 to 12.7mm) Microwave Conduit Fitting

Effective July 2024, Southwest Microwave **Model 316**, **Model 334** and **Model 336** Digital Microwave Intrusion Links (including Hi-Rel models) will no longer be supplied with a 1/2 inch (12.7mm) conduit fitting. Instead, these models will be supplied with a 3/4 inch (19.3mm) conduit fitting.

For sites replacing a Southwest Microwave analog or digital link or transceiver that uses a 1/2 inch (12.7mm) conduit fitting, where existing infrastructure cannot be modified to accommodate a 3/4 inch (19.3mm) fitting, an adapter kit is available to convert the 3/4 inch (19.3mm) fitting to a 1/2 inch (12.7mm) fitting.

The **0247573-A01 Adapter Kit** includes three (3) parts, as shown in Figure 1.

- A) 2647563-A01 Bushing, Reducer Adapter, NPT, SS
- B) 2946718-A01 Washer, Sealing, Gasket, SS Retainer
- C) 2945547-A03 Washer, Nylon Conduit, CRP

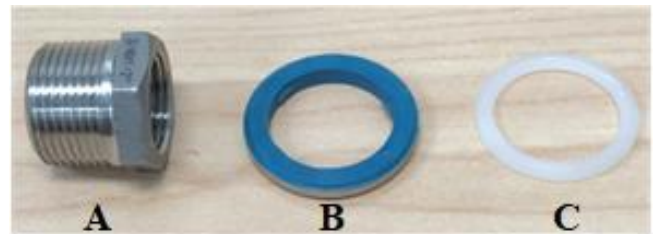


Figure 1

To install the Adapter Kit, remove the 3/4 inch (19.3mm) conduit fitting from the Model 316, 334 or 336 microwave link by unscrewing the nut on the conduit fitting, located on the interior side of the baseplate. Keep the nut, which will be reused with the new 1/2 inch (12.7mm) reducer adapter bushing. Feed the nylon washer then the sealing washer (thick part towards the baseplate) onto the threaded side of the 3/4 inch (19.3mm) bushing. Reinsert the bushing through the baseplate and tighten with the nut. Screw the existing 1/2 inch (12.7mm) conduit fitting into the 3/4 inch (19.3mm) bushing as shown in Figure 2.

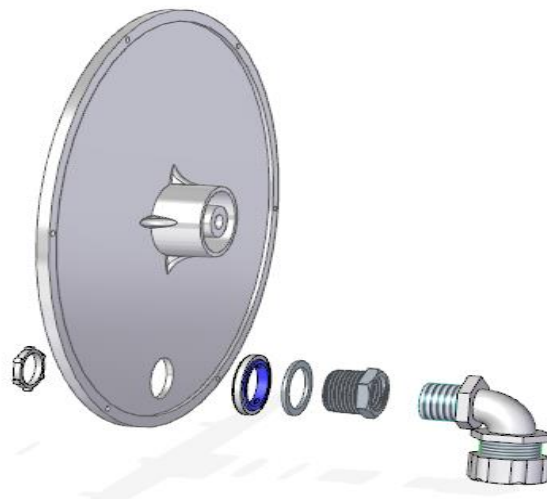


Figure 2